



SUMMIT CABS

Aspen



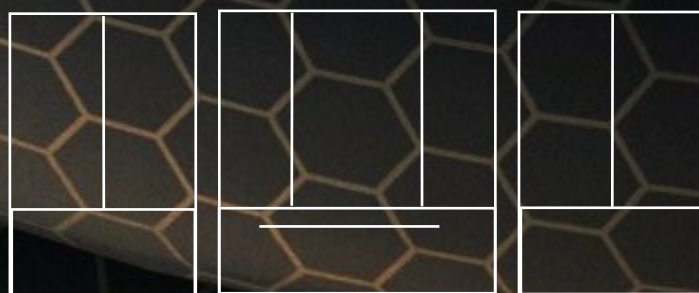
Birch



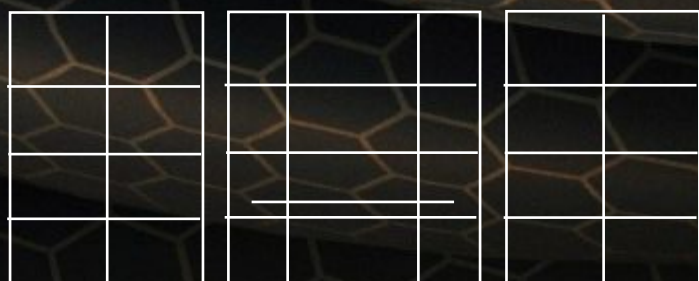
Cherry



Desert Palm



Elm



What you will see...



Ficus



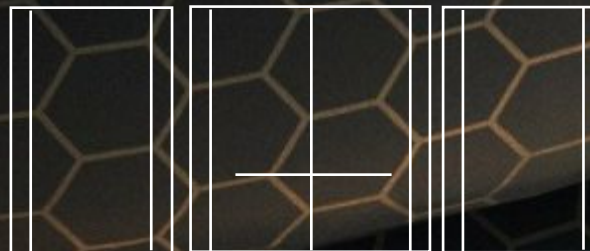
Golden Fir



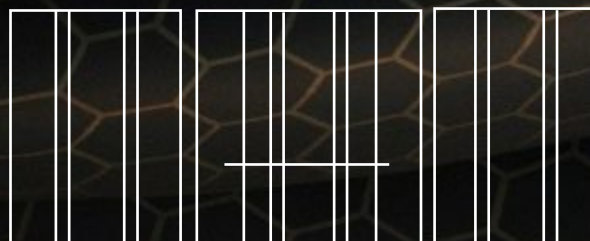
Hickory



Ironwood

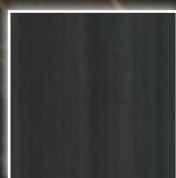


Juniper



Kiwi

ASPEN



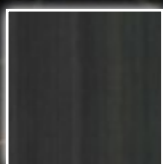
Main:
SC SW G86 Gregio Notte



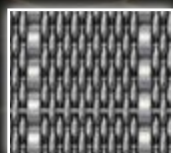
Accent:
SW L31-White Nebbia

ASPEN

The Aspen is one of our newest designs that allows for cross grains and many options with materials.



Main:
SC SW G86 Gregio Notte



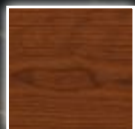
Accent:
SC BW DI 4



Belly Band:
SC SS Stainless #4

Birch

The Birch is a new design with horizontal panels, as well as, vertical panels in a three color contrasting configuration. The Birch allows for many configurations including mirror,



Main,
SC P W156 Grand Cherry



Accent Big: Back lit
SC SRS LG506



Accent Little:
SC SW 574-Natural Elm



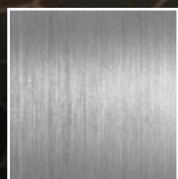
Birch



Main:
SC P WC230
BUTTER TOFFEE



Accent (1) Large:
SC P WP140
LICORICE-STICK

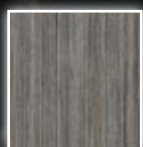


Accent (2) Small:
SC SS#4
Stainless Steel

Cherry



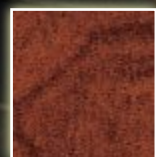
Main:
SC P WY160
Absolute Acajou



Main:
SC SW 589
Grey Echo



Main:
SC P WM791
Hardrock Maple



Accent:
SC F 7759
Select Cherry

Cherry



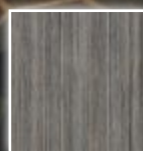
Main:
SC P WM791
Hardrock Maple



Accent:
SC F 7759
Select Cherry



Accent:
SC SW 589
Grey Echo

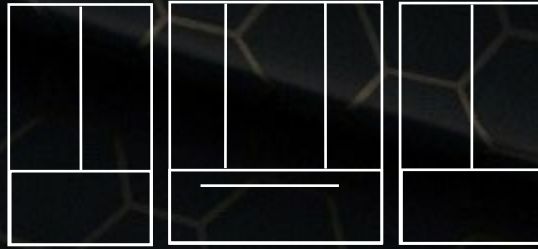


Main:
SC P WY160
Absolute Acajou

Cherry

The Cherry is an interior that is another standard for us, but would be a custom from anyone else. Because our of the way our system installs this custom now standard interior installs with ease. The main panels. Are install on a 45 degree angle with 1/4" x 1/4" in laid.

Desert Palm



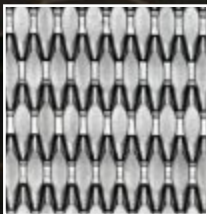
Main:
SC White Metallic Back
Painted Glass



Accent:
SC SW L33 Serotina

Desert Palm

The Desert Palm is a classic interior with either horizontal or vertical lower panel, and vertical upper panels. Our standard interior does not have a belly band accent, but we could easily input that into your design.



Main:
SC BW DS 2



Accent:
SC SW 574-Natural Elm

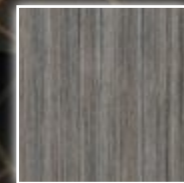
Elm



Main:
SC SW 589
Grey Echo

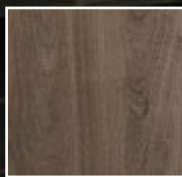


Main:
SC P WY160
Absolute Acajou

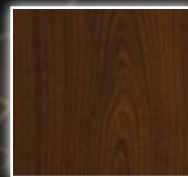


Elm

This Elm is another classic design that we kerf vertical and horizontally for a distinct look. We traditionally change the rear center wall for the accent, but we love to think outside the box so contact us for your next interior.



Accent:
SC SW L33 Serotina



Main:
SC P W341
Mocha Cherry

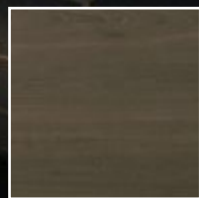
Grain direction maybe limited to the elevator size and/or the materials chosen.



Ficus



Accent:
SC SW L09
Kyushu



Main:
SC SW L31
White Nebbia



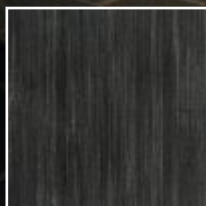
Ficus

The Ficus is probably the most classic of all elevator interiors for the last twenty years. This four layer horizontal design can be great for every situation.

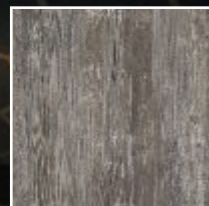


SC SW G87
Canella Rustik

Golden Fir



Accent:
SC F 8918
Blackened Steel



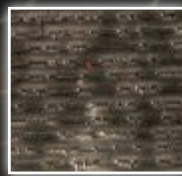
Main:
SC WP500
SMORES

This is our take on the classic seven panel system without the standard reveals between the panels. Our seven panel system will not allow any movement of the panels.

Golden Fir



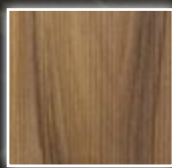
Main:
SC P WM791
Hardrock Maple



Accent:
SC PR 80441

Hickory

The Hickory is a great new design with a rear center accent panel, and side front or rear panel accents. Most of the interiors we do for this design are the main color is horizontal and the accents all vertical, but we do have products that we could change that to vertical grain on main and the accents can be horizontal.



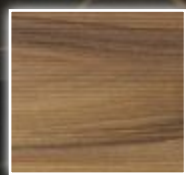
Accent:
SC SW G91
Carmelo Mist



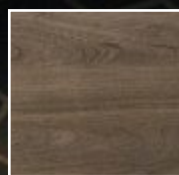
Main:
SC SW 589
Grey Echo



Hickory



Main:
SC SW G91
Carmelo Mist

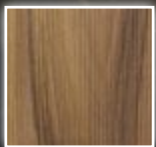


Accent:
SC SW L33 Serotina

Grain direction maybe limited to the elevator size and/or the materials chosen.

Ironwood

The Ironwood is a new design with a rear large vertical panel with two accent panels flanking it, with vertical accents and horizontal main panels on the sides.



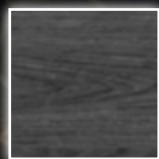
Main:
SC SW G91
Carmelo Mist



Main:
SC SW 589-Grey Echo

Grain direction maybe limited to the elevator size and/or the materials chosen.

Ironwood



Accent:
SC P L37 Laurel



Main:
SC SW
Grey Echo

Juniper

Our Juniper is a new design that has all vertical panels with six accent panels; which gives you real versatility with all of our great materials.

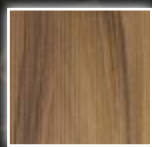


Main:
SC SW 574-Natural Elm



Accent:
SC CW Reed Ash

Juniper



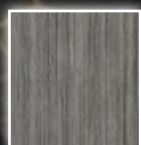
Main:
SC SW G91
Carmelo Mist



Accent:
SC P W341
Mocha Cherry



Kiwi



Main:
SC P WY160
Absolute Acajou



Accent Big:
SC R 5-WL



Accent Little:
SC SW 574
Natural Elm

Kiwi

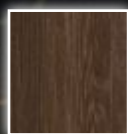
The Kiwi is probably our most popular interior due to its amazing versatility. It has three colors all vertical with a main color and two accent in different widths.



Main:
SC SW G86
Gregio Notte



Accent large:
SC SW L09-Kyushu



Third Accent small:
SC SW L01 Cerise

Brass rails, and reveals with a brass LED island ceiling



SUMMIT CABS

www.summitcabs.com

303-886-4560